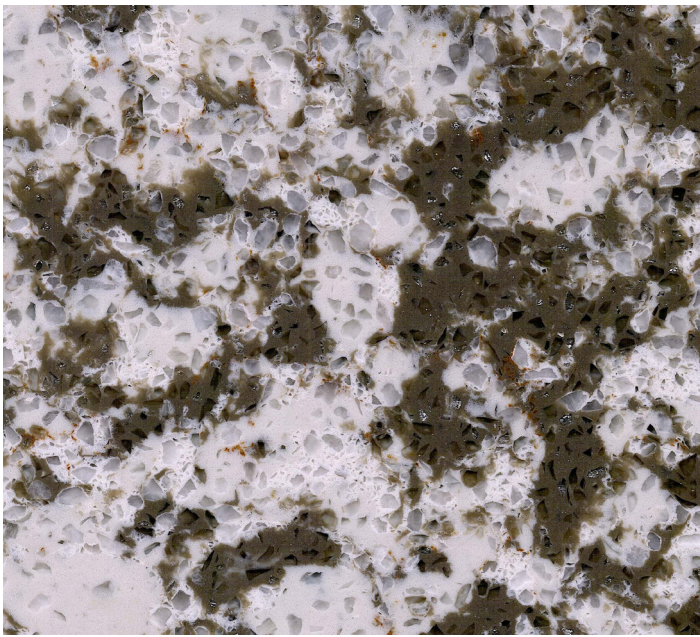




# CITAL QUARTZ

## ESSENZA



## ALASKA

### FEATURES

**FINISHES** Polished

**THICKNESS** 3/8" (1cm), 1/2" (1.2cm), 3/4" (2cm), 1 1/4" (3cm)

**SLAB SIZE** 118x55in (300x140cm)

#### FLOORING SIZES

24x24in, 16x24in, 12x24in, 16x12in, 12x12in  
60x60cm, 40x60cm, 30x60cm, 40x30cm, 30x30cm



#### EDGE DETAIL



Basic eased    Straight bevel    Bullnose

## TECHNICAL INFORMATION

Absorption by weight	ASTM C97/C97M-09	0.06 %
Density		2370 kg/m <sup>3</sup>
Abrasion resistance (polished)	ASTM C241/C241M-13	47
Flexural strength	ASTM C880/C880M-09	Dry condition: 34.9 MPa Wet condition: 37.5 MPa
Compressive strength	Refer to ASTM C170/C170M-14	Dry condition: 192 MPa Wet condition: 185 MPa
Breaking strength	ASTM C 648-09	5100 N
Thermal expansion	ASTM C531-00(2012)	30.9×10 <sup>-6</sup> /°C
Chemical resistance	ASTM C650-04(2009)	Not affected
Abrasion wear index	ASTM C501-84(2009)	Wear index: 136

